

PART OF THE SW.1/4, SEC. 12, T.6N., R.2E., S.L.B. & M.  
**SOUTH FORK ESTATES**

IN WEBER COUNTY

SCALE 1" = 200'

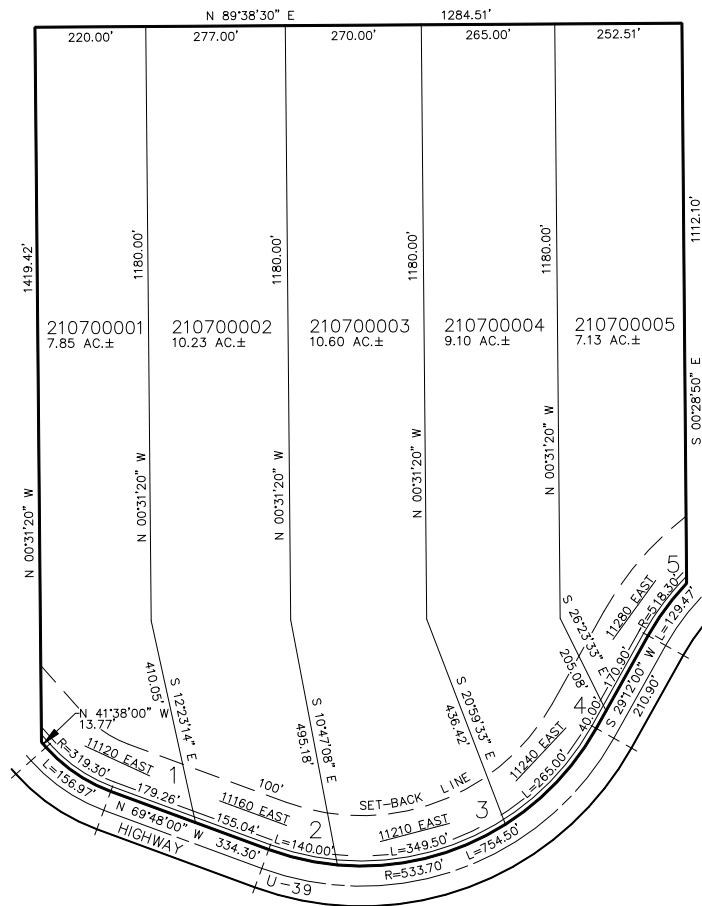
TAXING UNIT: 58

70

SEE PAGE 14

SEE PAGE 13

SEE PAGE 14



SEE PAGE 16

FOR COMPLETE ENG DATA SEE  
 ORIGINAL DEDICATION PLAT IN  
 BOOK 38, PAGE 10 OF RECORDS.

10' UTILITY & DRAINAGE EASEMENTS EACH  
 SIDE OF PROPERTY LINES AS INDICATED  
 BY DASHED LINES EXCEPT AS OTHERWISE  
 SHOWN.

- \* 10' EASEMENT NORTH OF U-39  
 DEDICATED TO THE PUBLIC FOR  
 THE WIDENING OF U-39.
- \* SEE ORIGINAL DEDICATION PLAT  
 FOR INFORMATION ON 20' DRAINAGE  
 EASEMENT (NOT SHOWN).